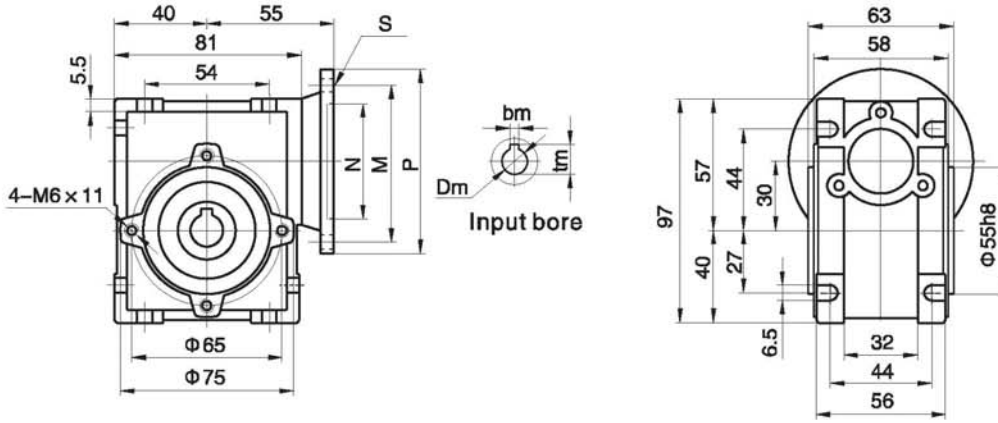


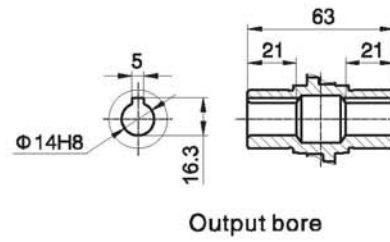
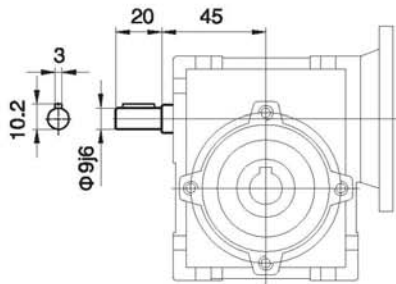
Dimensions

# NMRV

030



# NMRV.VS



PAM-HEC	N (H8)	M	P	bm	tm	S	Dm(H7)												
							5	7.5	10	15	20	25	30	40	50	60	80	100	Depth
63B5	Φ95	Φ115	Φ140	4	12.8	Φ9	11	11	11	11	11	11	11	11	11	-	-	-	23
63B14	Φ60	Φ75	Φ90	4	12.8	Φ6	9	9	9	9	9	9	9	9	9	9	9	9	20
56B5	Φ80	Φ100	Φ120	3	10.4	Φ7	9	9	9	9	9	9	9	9	9	9	9	9	20
56B14	Φ50	Φ65	Φ80	3	10.4	Φ6	9	9	9	9	9	9	9	9	9	9	9	9	20

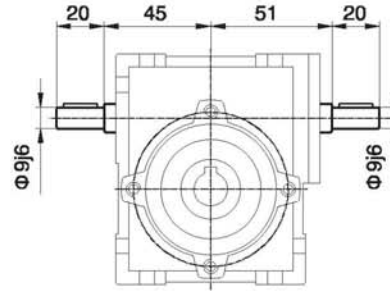
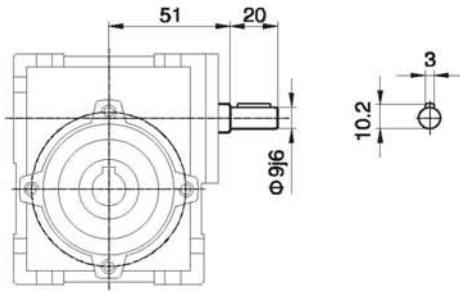
Weight: 1.3kg

# Dimensions

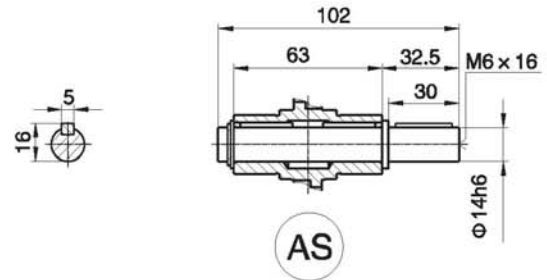
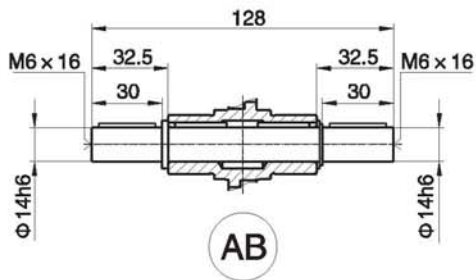
## NRV

## 030

## NRV.VS



### Output shaft



### Output flange

